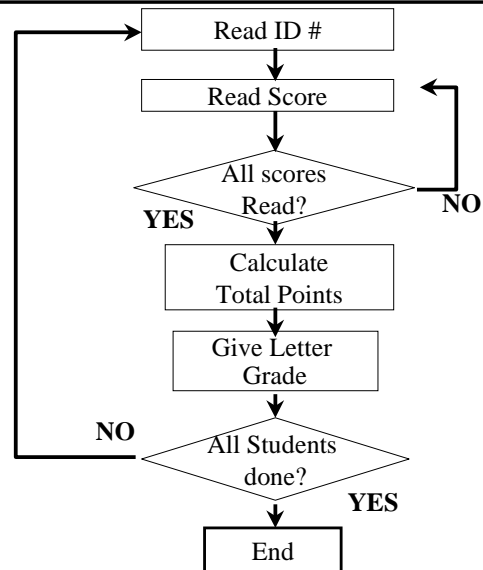


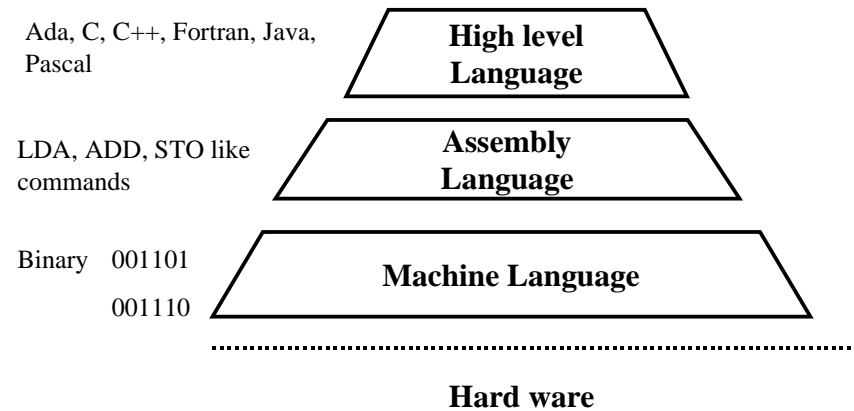
## Finding Student Grade (Flow chart)



August 25

CS 1344

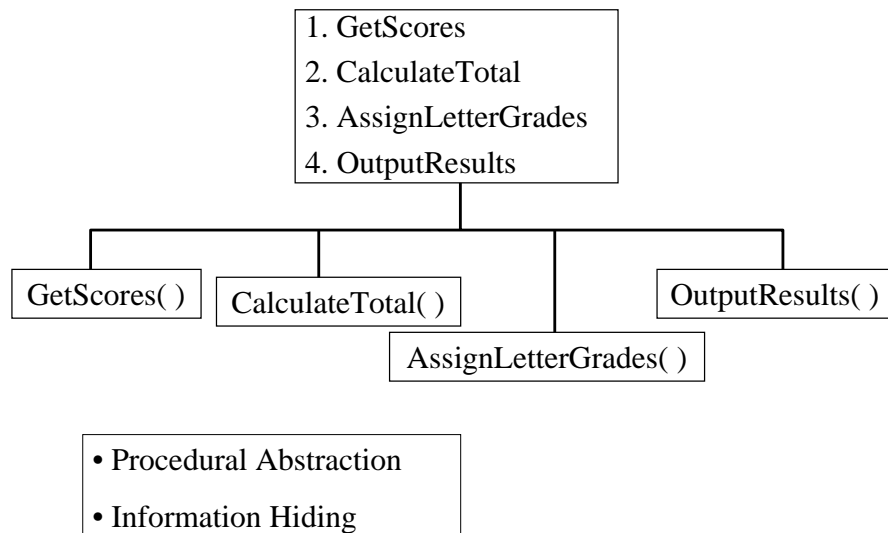
## Language Levels



August 25

CS 1344

## Modular Structure Chart (To Find Students' Letter Grade)



September 1

CS 1344

## Pseudocode Design Example

2.4

```

PRINT "Enter the possible perfect number"
READ p

Comment initialize sum of the divisors & divisor
DivSum = 1
Divisor = 2

Comment find all possible divisors
While Divisor <= p / 2 Do
    R = p - (Truncate ( p/Divisor ) ) * Divisor
    IF R = 0 THEN
        DivSum = DivSum + Divisor
    EndIF
    Divisor = Divisor + 1
EndWhile

If DivSum = p Then
    PRINT p " is a perfect number "
Else
    PRINT p " is NOT a perfect number "
EndIf
    
```

September 1

CS 1344